

MONTHLY MEMBERSHIP PROGRESS REPORT

LOCATION PAKISTAN

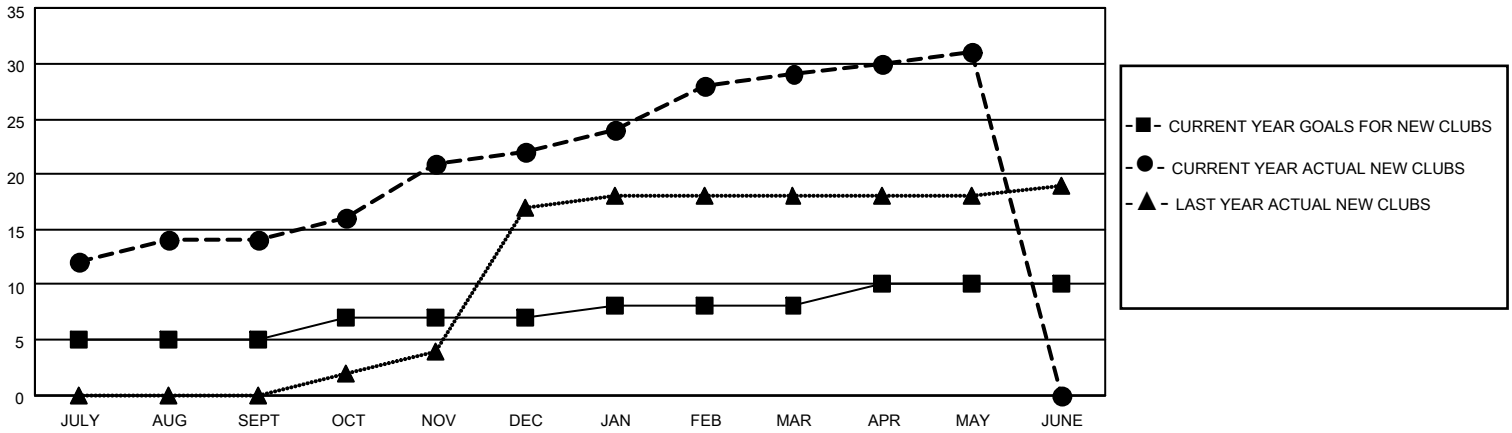
District 305 N1

Results as of: 5/31/2022

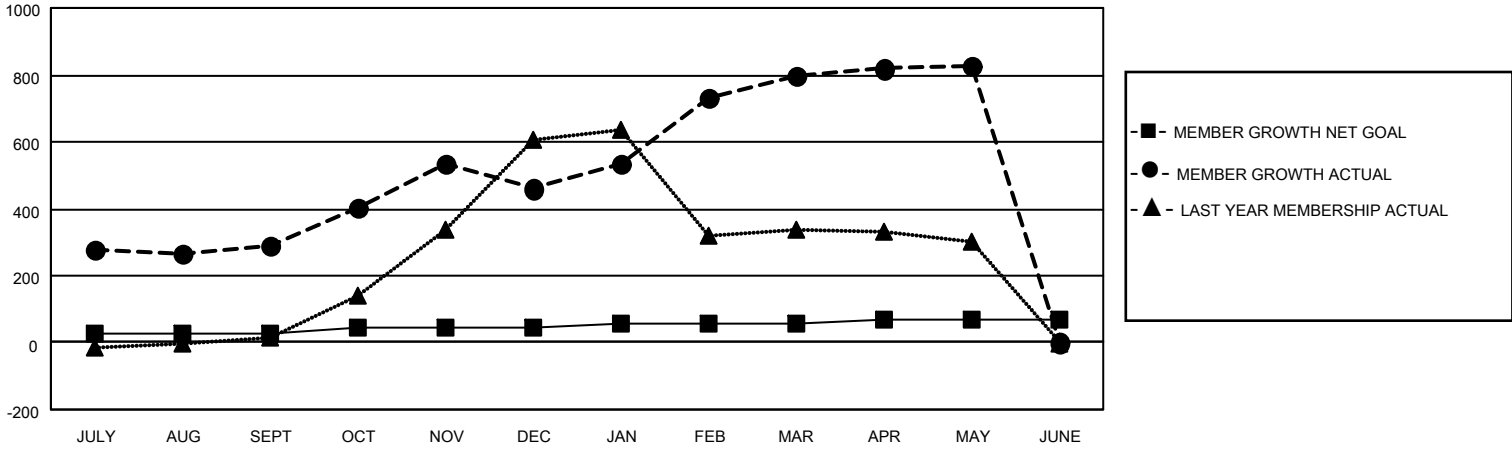
Clubs			
RESULTS FOR 2021-2022			
QUARTER	NEW CLUB GOAL	NEW CLUBS	DROPPED CLUBS
JULY/AUG/SEPT	5	14	5
OCT/NOV/DEC	2	8	4
JAN/FEB/MAR	1	7	1
APR/MAY/JUNE	2	2	0

Members			
RESULTS FOR 2021-2022			
QUARTER	MEMBER GROWTH NET GOAL	MEMBER GROWTH ACTUAL	DROPPED MEMBERS ACTUAL (including transfers)
JULY/AUG/SEPT	25	398	94
OCT/NOV/DEC	20	380	198
JAN/FEB/MAR	10	452	60
APR/MAY/JUNE	15	167	134

GOALS AND ACTUAL NEW CLUBS CUMULATIVE



GOALS AND ACTUAL MEMBERS CUMULATIVE



DROPPED CLUBS: 10

99 CLUBS OF 150 ADDED 1 OR MORE NEW MEMBERS

GENDER DISTRIBUTION

MALE	2,914 (78.00%)
FEMALE	822 (22.00%)
NON BINARY	0 (0.00%)
PREFER NOT TO ANSWER	0 (0.00%)

DROPPED MEMBERS

[CLICK HERE FOR CUMULATIVE MEMBERSHIP DATA](#)

DECEASED	7
CLUB CANCELLED	135
OTHER	344
TOTAL	486

TOTAL FAMILY UNIT MEMBERS 2,873

FAMILY MEMBERS PAYING HALF DUES 2,163